

Rotary Electric Switches

MIL 496

MIL 496 rotary switches are used for electrically indicating one or two predetermined positions in the stroke of a control valve. They may be connected to audible alarms or signal lights for warning of valve or system malfunction. These switches may also be used to actuate solenoids, relays and other electrical devices. Basic switches (4) in the unit are single pole, double throw snap acting and are individually adjusted by cams (13) on the rotating shaft (11). Vernier adjustment is made by means of locking type set screws (Nylock) (2) in the cams and these screws actuate the switches by contacting the switch spring levers. The spring lever provide over travel protection and allow maintained contact when required.

The MIL 496 is available with either one or two switches, each with an adjustable cam to actuate it or with proximity switches.

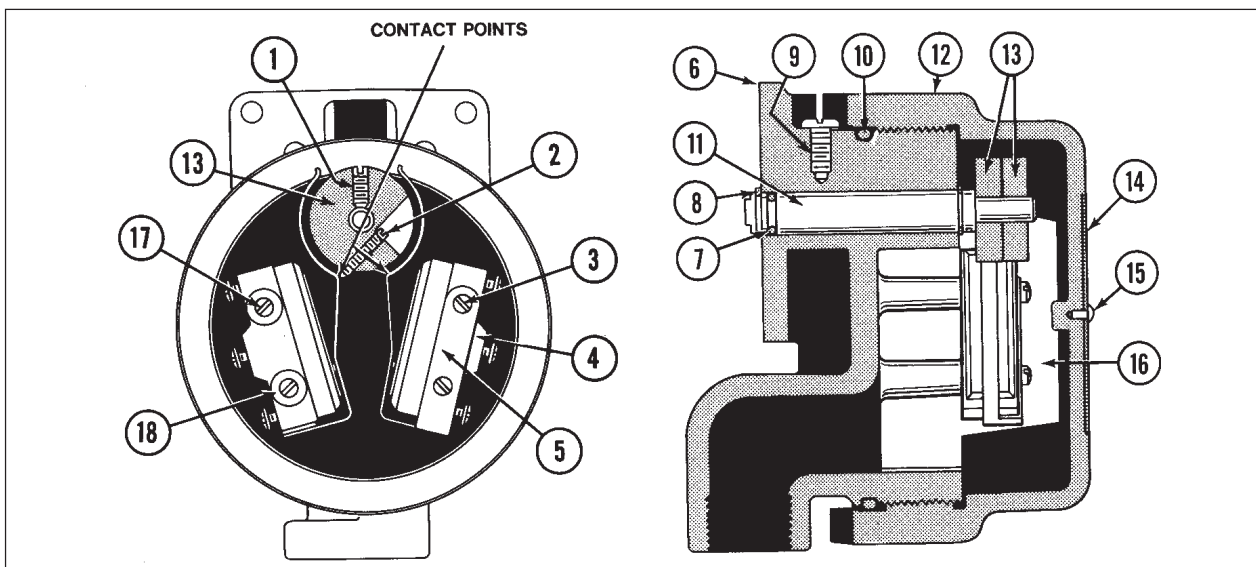


The housing and cover are of anodized Aluminium and are explosion proof. In addition, O-ring seals (7, 10) in the cover and rotary shaft, make the switch waterproof.

The addition of a standard back lever and linkage permits its use with the linear motion valves .

Parts Reference

Ref No.	Part Name	Ref No.	Part Name
1	Screw	10	O-Ring
2	Screw	11	Shaft
3	Screw	12	Cover
4	Microswitch	13	Cam
5	Lever	14	Serial Plate
6	Body	15	Drive Screw
7	O-Ring	16	Insulator
8	Snap Ring	17	Screw
9	Screw	18	Washer



Specifications

General Data

Rotary travel	:	360°
Max. Linear Travel	:	4" with standard back lever and linkage
Maintained contact	:	90° maximum
Ambient Temperature	:	-54° C to +82° C

Electrical Safety & Enclosure

Sealing

Weatherproof	:	IP 65 as per IS 2147
--------------	---	----------------------

Hazardous Area Certificates

Flame proof	:	Exd IIA, IIB as per IS 2148 Exd IIC as per IS 2148
-------------	---	-------------------------------------------------------

Switches

Type	:	Single Pole, Double Throw snap acting is standard Double Pole, Double Throw snap acting also available Proximity Switches - Optional
Actuator	:	Individually adjusted cams

Model Numbers

496.1	:	1 SPDT Switch
496.2	:	2 SPDT Switches
496.4	:	1 Proximity Switch
496.5	:	2 Proximity Switches
496.6	:	1 DPDT Switch
496.7	:	2 DPDT Switches
496.7A	:	4 SPDT Switches

Switch Ratings

SPDT	:	0.02A, 220 V DC (Inductive)
		0.03A, 110 V DC (Inductive)
		0.2A, 220 V DC (Resistive)
		0.4A, 110 V DC (Resistive)
		1A, 125 V AC
		5A, 440 V AC
15A,		125, 250, 480 V AC

DPDT	:	0.15A, 250 V DC
		0.3A, 125 V DC
		10A, 125 or 250 V AC

Proximity:	24 V DC
-------------------	---------

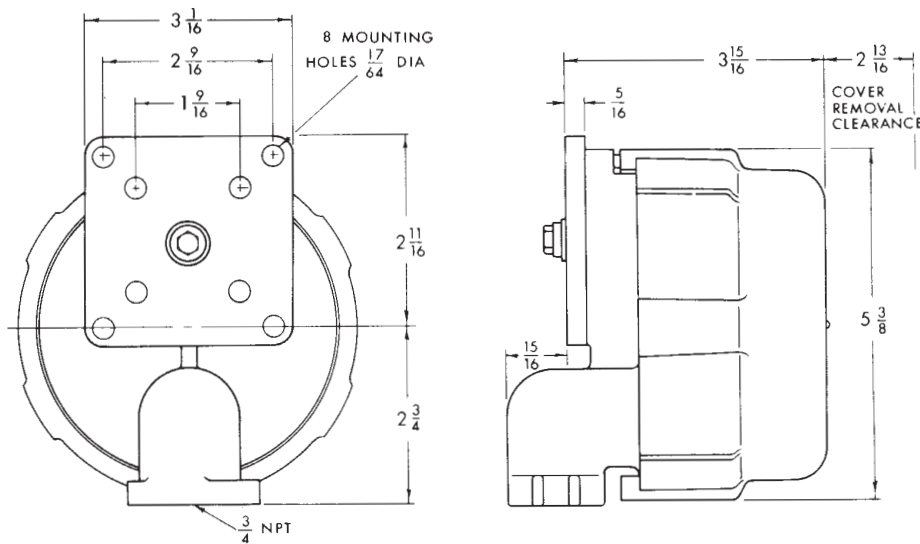
Material

Housing and cover	:	Anodized Aluminum
Shaft	:	Type 304 Stainless Steel
O-ring seals	:	Buna-N

All internal parts are of stainless steel, zinc plated steel or nickel plated brass. No copper bearing alloys are exposed to atmosphere.

Performance

Differential gap (reset)		
with standard switch	:	1.5% with 50° travel
	:	1.0% with 90° travel
Repeatability	:	0.2%



Dimensions (inch)

Note : Due to Continuous product improvement, the specification / values are subject to change

MIL Controls Limited

A KSB Company

REGD. OFFICE & WORKS

Meladoor , PIN 680 741, Thrissur Dist., Kerala, India
T: 91 (0)488 890272, 890772, 891773, F: 91 (0)488 890952, E: milf@vsnl.com

MARKETING HEAD OFFICE

P. B. No. 04, Aluva , PIN 683 101, Ernakulam Dist, Kerala, India
T: 91 (0)484-624955, 624876, F: 91 (0)484-623331, E: ksbnmil@sancharnet.in, milksb1@vsnl.net

BRANCH OFFICES

NEW DELHI, MUMBAI, CALCUTTA, CHENNAI, VADODARA, POONA